



Jing Shan Primary School
United and True, Onward We Strive

2024 JS e-Open House
Wednesday, 10 July 2024

*Sharing by
Mrs Sharon Siew, Principal*



What would you like to know more about the school?

1. Canteen
2. CCA
3. Challenges
4. Class Size
5. Communication
6. Culture
7. Curriculum
8. Directions
9. Discipline
10. Enrichment
11. Enrolment
12. Environment
13. Parent Engagement

14. Parent Engagement
15. Preparing for P1
16. Programmes
17. Recess
18. Registration Process
19. Schedule
20. School Bus
21. Staff
22. Student Care
23. Student Profile
24. Support for Students
25. Transition to P1
26. Uniform



My Journey in Education

Mrs Sharon Siew

Yishun Junior College
Mathematics Teacher
HOD/Student Welfare

**Curriculum Planning and
Development Division**
MOE HQ Officer

Bowen Secondary School
Vice-Principal

Tampines Primary School
Vice-Principal



Cedar Primary School
Principal
2008 to 2012
An Established School



Riverside Primary School
Principal
2013 to 2019
A Brand New School



Jing Shan Primary School
Principal
2020 to date
A Merged School

Parents as Collaborative and Supportive Partners



“Unity” by Cleo V. Swarat

I dreamed I stood in a studio
And watched two sculptors there,
The clay they used was a young child’s mind
And they fashioned it with care.

One was a teacher:
the tools she used were books and music and art;
One was a parent
With a guiding hand and gentle loving heart.

And when at last their work was done,
They were proud of what they had wrought.
For the things they had worked into the child
Could never be sold or bought!

And each agreed she would have failed
if she had worked alone.

**For behind the parent stood the school,
and behind the teacher stood the home!**



About Jing Shan Primary School

- A merger of the former Jing Shan Primary School and the former Da Qiao Primary School in 2019
- Enrolment of about 920 students in 2024
- Full team of staff including 1 Vice-Principal (Ms Angela Ng), 1 Vice-Principal (Administration) (Ms Ellen Lim), Key Personnel, Teachers, Allied Educators, and Administration and Operations Officers
- Newer school facilities (e.g. Indoor Sports Hall and school field)
- MOE Kindergarten started operations in 2022



(School Website)

<https://jingshanpri.moe.edu.sg/>

This deck of slides will be uploaded onto the school website.



The Facebook page and Instagram account feature posts on our school programmes and learning environment as well as photographs that celebrate our JingShanites and their learning and growth.

(Facebook)

Jing Shan Primary School

www.facebook.com/jingshanpri/



(Instagram)

[the_jsps_story](https://www.instagram.com/the_jsps_story)

Questions and Curiosities

P1 Registration



<https://www.moe.gov.sg/primary/p1-registration>

SchoolFinder

CourseFinder

Academic calendar

Quick links

♥ My shortlisted (0)



Ministry of Education
SINGAPORE

Education levels ▾

Financial matters ▾

Education in SG ▾

Newsroom ▾

Careers

About MOE



[MOE](#) > [PRIMARY](#) >

Last Updated: 04 July 2024

Primary 1 (P1) registration

You can prepare and register your child for P1 through the P1 registration process. Learn about it and how to get started.



Phase 2A registration will be conducted from 9am on Thursday, 11 July 2024 to 4.30pm on Friday, 12 July 2024. [Find out more and register.](#)

What is Primary 1 registration

Primary 1 registration is a process to register your child for mainstream primary schools in the following year.

While primary school education is [compulsory](#) for all Singapore Citizens (SC), the P1 registration

Help us improve



Show desktop

Overview

Parents of Singapore Citizen (SC) and Permanent Resident (PR) children can register through the P1 Registration Portal.

On the portal, you can:

- View your child's eligible registration phases and schools from 9am on Tuesday, 2 July 2024.
- Register your child during their eligible phases, from Phase 1 to 2C Supplementary.
- Check registration outcome on results announcement days. (You will also be notified of the results through SMS.)

P1 registration for international students is a different process. [Find out more.](#)

If you are using a caregiver's address for registration



To register

Log in to the P1 Registration Portal with your Singpass to register during your child's eligible phase registration period.

Only one parent is required to register. In the Registration Portal, you are required to declare that you have sought consent from the other parent to register your child for P1.

P1 REGISTRATION PORTAL

To register, click on the Registration tab in the portal.

Part of:

Primary 1 registration: step-by-step



Get started

- Overview

Choose a school

- How to choose a school
- Address used for registration
- How distance affects priority admission

Prepare for registration

- Registration phases and key dates
- Cap on Permanent Resident Intake for Phases 2C and 2C Supplementary
- Understand how balloting works
- 2023 P1 Registration Exercise: Vacancies and balloting data

During registration

- How to register
- 2024 P1 Registration Exercise: Vacancies and balloting updates

After you register

- Receive results
- Report to school
- School-based Student Care Centres



Registration phases for SCs and PRs

You may register your child online in a phase as long as you fulfil at least one of the requirements for that phase.

1	2A	2B	2C	2C Supplementary
---	----	----	----	------------------

Phase 1

- For a child who has a sibling studying in the primary school.

KEY DATES

📅 Registration

From: 9am on Tuesday, 2 July 2024

To: 4.30pm on Thursday, 4 July 2024

🗨️ Result

Wednesday, 10 July 2024

All eligible Phase 1 applicants will be offered a place.

Find out [how to register](#).

You may register your child online in a phase as long as you fulfil at least one of the requirements for that phase.

1	2A	2B	2C	2C Supplementary
---	----	----	----	------------------

Phase 2A

For a child:

- Whose parent or sibling is a former student of the primary school, including those who have joined the alumni association of the primary school as a member.
- Whose parent is a member of the School Advisory or Management Committee.
- Whose parent is a staff member of the primary school.
- From the MOE Kindergarten under the purview of and located within the primary school.

KEY DATES

📅 Registration

From: 9am on Thursday, 11 July 2024

To: 4.30pm on Friday, 12 July 2024

🗨️ Result

Friday, 19 July 2024

Find out [how to register](#).

You may register your child online in a phase as long as you fulfil at least one of the requirements for that phase.

1	2A	2B	2C	2C Supplementary
---	----	----	----	------------------

Phase 2B

For a child:

- Whose parent has joined the primary school as a parent volunteer not later than 1 July of the year before P1 registration and has given at least 40 hours of voluntary service to the school by 30 June of the year of P1 registration.
- Whose parent is a member endorsed by the church or clan directly connected with the primary school.
- Whose parent is endorsed as an active community leader.

KEY DATES

📅 Registration

From: 9am on Monday, 22 July 2024
To: 4.30pm on Tuesday, 23 July 2024

💬 Result

Monday, 29 July 2024

Note:

- We will reserve 20 places in each primary school for Phase 2B to ensure continued access to all primary schools.

Note

Jing Shan Primary School does not have the parent volunteer scheme in relation to P1 registration.

You may register your child online in a phase as long as you fulfil at least one of the requirements for that phase.

1	2A	2B	2C	2C Supplementary
---	----	----	----	------------------

Phase 2C

- For a child who is not yet registered in a primary school.

KEY DATES

📅 Registration

From: 9am on Tuesday, 30 July 2024
To: 4.30pm on Thursday, 1 August 2024

🗨️ Result

Tuesday, 13 August 2024

Note:

- We will reserve 40 places in each primary school for Phase 2C to ensure continued open access to all primary schools.
- There will be a [cap on the intake of PR children](#) in a few schools to prevent the concentration of PR children in our primary schools.

Find out [how to register](#).

You may register your child online in a phase as long as you fulfil at least one of the requirements for that phase.

1	2A	2B	2C	2C Supplementary
---	----	----	----	------------------

Phase 2C Supplementary

- For a child who is not yet registered in a primary school after Phase 2C.

KEY DATES

📅 Registration

From: 9am on Thursday, 15 August 2024
To: 4.30pm on Friday, 16 August 2024

🗨️ Result

Tuesday, 27 August 2024

Note:

- There will be a [cap on the intake of PR children](#) in a few schools to prevent the concentration of PR children in our primary schools.

Find out [how to register](#).

Primary 1 registration for international students

1. Overview
2. [Indicate your interest](#)
3. [Receive offer and register](#)

1. Overview

International students (IS) can only register for P1 during Phase 3 of the P1 Registration Exercise, after all Singapore Citizens and Permanent Residents have been allocated a place under the earlier phases.

Prior to Phase 3, ISes must go through a 2-step process:

1. Submit an online indication of interest form, available [here](#) from 9am on Tuesday, 28 May 2024 to 4.30pm on Monday, 3 June 2024, otherwise you will not be able to register in Phase 3 of the P1 Registration Exercise.
2. We will notify you via email by October:
 - Whether your child can be offered a P1 place.
 - How to register in Phase 3 with the designated school if they are offered a place.

How balloting works

Balloting is conducted when the number of registrants exceeds the school vacancies, which can happen in any phase from 2A to 2C Supplementary.

You can check the [list of primary schools that require balloting](#) at the end of the phase to see if your child needs to ballot for a place in your preferred school.

Computerised balloting will be conducted centrally by MOE. All registrants who are required to ballot are assured of an equal chance for admission into the school.

Priority admission to a school will be given to children in this order:

1. Singapore Citizens (SC) living within 1km of the school.
2. SCs living between 1km and 2km of the school.
3. SCs living outside 2km of the school.
4. Permanent Residents (PR) living within 1km of the school.
5. PRs living between 1km and 2km of the school.
6. PRs living outside 2km of the school.

Jing Shan Primary School



2023

Registration for 2024 P1

Available vacancies

150

● Phase 1

All eligible applicants were offered a place.

51

■ Phase 2A

Vacancies

39

Applicants

51

🏛 Balloting: Yes

Conducted for: Singapore Citizen children residing between 1km and 2km of the school.

Vacancies for ballot

4

Balloting applicants

9

● Phase 2B

Vacancies

20

Applicants

1

🏛 Balloting: No

■ Phase 2C

Vacancies

61

Applicants

62

🏛 Balloting: No

No balloting was conducted. Places were offered to all Singapore Citizen children, and Permanent Resident children residing within 1km of the school.

Phase 2C Supplementary

No registration was conducted in Phase 2C Supplementary. All school places were filled by Phase 2C.

[See school on map](#)

2024 P1 Registration for Admission to 2025 P1

5 P1 Classes (total of 150 places) (30 students per P1 class)

- 60 places filled at Phase 1

Jing Shan Primary School

Available vacancies in Phase 2A

30

<https://www.moe.gov.sg/primary/p1-registration/vacancies-and-balloting>

CHOOSING A PRIMARY SCHOOL

WHAT IS MY CHILD interested in?

Is he artistic? Athletic?

Each school has its niche areas, identity and values. Some may have a focus on a sport or a performing art.

I'll choose the school that nurtures my child in a holistic way and with programmes that best suits his interests!

MOTHER TONGUE Languages

Finding out what Mother Tongue Languages are offered by each school is important.

- Chinese language is offered in all schools.

- Malay Language is offered in all schools except Special Assistance Plan or SAP schools.

- While Tamil Language is offered in most schools, I should confirm this with my preferred school just to be sure.

IS THE SCHOOL near my HOME?

It would mean shorter traveling time, lower transport costs and more opportunities for me to take part in their activities and to know more about the school.

Find schools near your home!

[HTTP://one.map.sg](http://one.map.sg)

MOST OF ALL

I want my child to be happy and enjoy fulfilling years of learning, friendships & enrichment in school!

Some Considerations

- Your Child's Interests
 - School's Distinctive Programmes
 - Co-Curricular Activities (CCA)
 - School-Based Programmes
- Travel Time and Distance to School
- Mother Tongue Languages
- School Culture



2024 P1 Orientation for 2025 P1 Cohort

Orientation Briefing and Programme

Thursday, 7 November 2024, 2.00pm to 4.00pm

Parents and child are to attend the in-person event.



School-Based Student Care Centre (SCC)

- After the completion of the P1 registration exercise at ALL phases, parents of enrolled P1 students will be invited to a virtual briefing by the operator, Little Professors Student Care Centre.
- The virtual briefing will tentatively be conducted by mid-October 2024, ahead of P1 Orientation (Thursday, 7 November 2024). Look out for an SMS/email by end-September 2024.
- Application for SCC will only be open after this briefing.
- Successful and unsuccessful applicants will be informed latest by P1 Orientation.
- So far, the SCC has been able to meet the enrolment needs of P1 students.

Questions and Curiosities
Jing Shan
Primary School





JING SHAN PRIMARY SCHOOL TOTAL CURRICULUM FRAMEWORK

STRATEGIC AREAS OF FOCUS

Develop Critical & Inventive Thinkers
Ensure Student Well-Being
Embrace All Learners
Leverage People & Partnerships

UPPER SCHOOL
Flourish & Be Grateful

MIDDLE SCHOOL
Strive & Be Centred

LOWER SCHOOL
Grow & Be Present

VISION

THRIVING EXPLORERS MINDFUL LEADERS

LEARNING DISPOSITIONS

MOTIVATION • APPRECIATION • RESILIENCE • CREATIVITY

Culture of
Learning

LEARN FOR LIFE FLOURISH AS ONE

Culture of
Well-Being

Customised Curriculum
Thoughtful Pedagogy
Balanced Assessment

STRENGTHS-BASED
APPROACH
TO CURRICULUM
DESIGN

BRAVERY

RESPONSIBILITY

INTEGRITY /
INVENTIVENESS

GRATITUDE

HUMILITY

TENACITY

B R I G H T
VALUES

SCHOOL MOTTO

United & True, Onward We Strive

SCHOOL OPERATING PRINCIPLES

A Positive
School Tone of
Care, Respect
& Discipline

A Safe &
Health-Promoting
School

A Vibrant &
Stimulating
Environment

Total Curriculum Framework

*Life is like a
painting.
Make yours a
masterpiece!*



We define a future-ready learner as a Thriving Explorer, Mindful Leader with the JS Learning Dispositions.



BRIGHT Values – The Guiding Statements

Bravery – I stand for what is right.

Responsibility – I play my part well.

Integrity – I do the right thing even when no one is watching.

Invventiveness – I think of ways and act to make positive change.

GratITUDE – I am thankful for everything I have.

Humility – I can always improve.

Tenacity – I never give up.



ENGLISH LANGUAGE

EMPATHETIC COMMUNICATORS



MOTHER TONGUE LANGUAGES

CONFIDENT COMMUNICATORS



SCIENCE

CURIOUS YOUNG SCIENTISTS



Nurturing Future-Ready Learners

Thriving Explorers, Mindful Leaders

with the JS Learning Dispositions of
Motivation, Appreciation, Resilience, Creativity



THE JS STUDENT OUTCOMES

MOTIVATED LEARNERS with a growth mindset

CREATIVE THINKERS who adapt to new situations and solve problems collaboratively

RESILIENT INDIVIDUALS who persevere to overcome challenges

APPRECIATIVE PERSONS who act in service of self and others

MATHEMATICS

RESILIENT MATHEMATICAL PROBLEM SOLVERS



SOCIAL STUDIES

ACTIVE CITIZENS



PHYSICAL EDUCATION

JOYFUL ATHLETES



IMAGINATIVE ARTISTS



EXPRESSIVE MUSICIANS



JS Cycle of Learning: The Student Experience



THRIVING JINGSHANITES

know how to leverage their **STRENGTHS** to:

P

POSITIVE EMOTIONS

Build their positivity bank by practising **GRATITUDE** and creating time for activities that evoke positive emotions

E

ENGAGEMENT

Work on activities and tasks that build their **CREATIVITY** and develop their **MASTERY** in learning

R

POSITIVE RELATIONSHIPS

Embrace **DIVERSITY** and build **RELATIONSHIPS** with self, peers, family, the community and the environment

M

MEANING

Make meaning in all their actions through **MINDFULNESS** and **DO GOOD** to **FEEL GOOD**

A

ACCOMPLISHMENT

Have a **GROWTH MINDSET** in setting **GOALS** for self and celebrate **EFFORT**

V

VITALITY

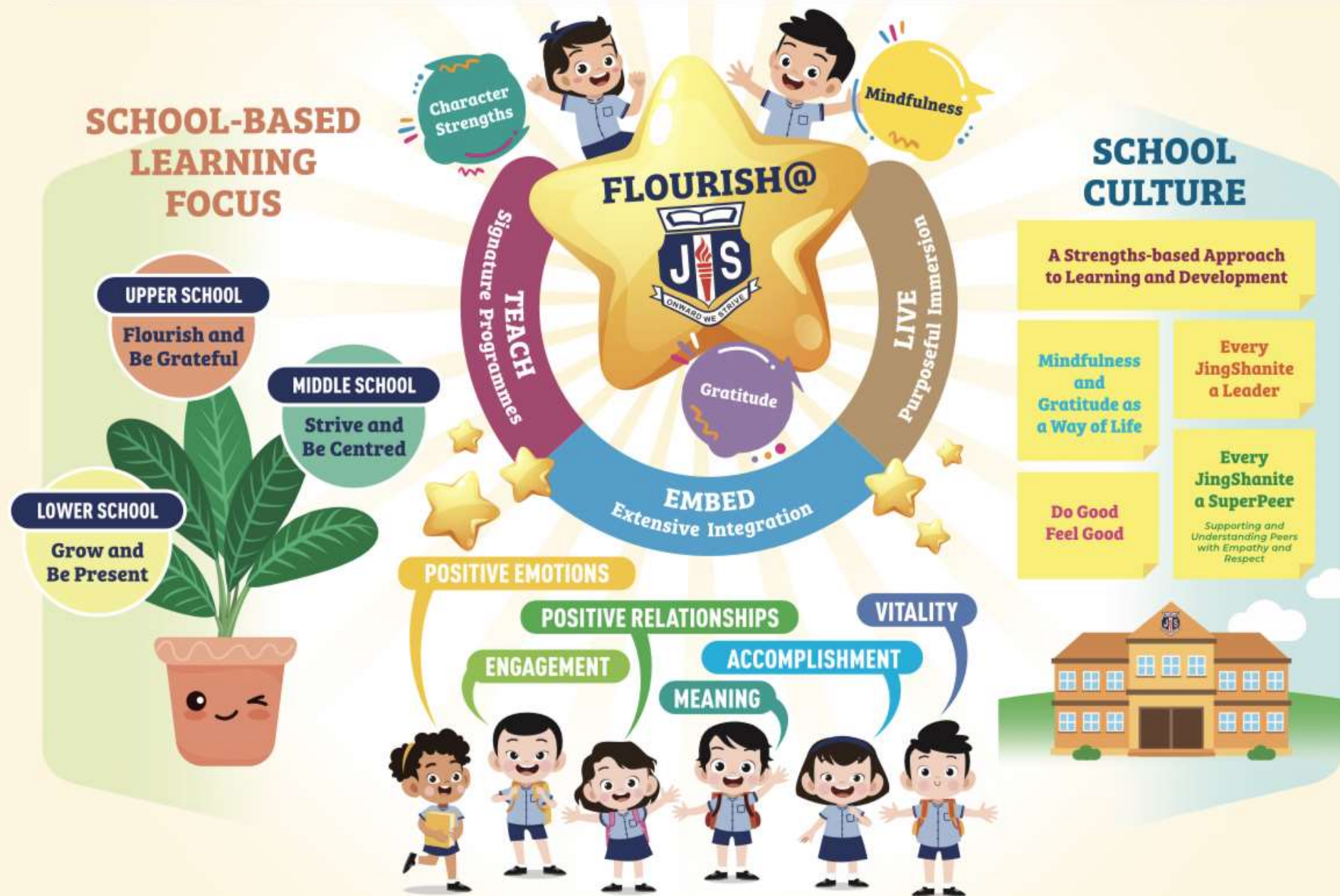
Practise **HEALTHY HABITS** in diet, fitness and rest cycles



Green Explorers @ JS



Flourish @ JS - Character Strengths, Mindfulness and Gratitude in Action





Every JingShanite A Leader and A SuperPeer

No Pinnacle Student Leadership Position

*No Prefectorial Board. No One Head Prefect.
All P1 to P6 students are leaders in an area of choice.*

Peer Support and Relationships

*SUPER refers to Supporting and Understanding Peers
with Empathy and Respect.*

JS Design Education



Programme Approach

TEACH
Signature
Modules

EMBED
Extensive
Integration

LIVE
Purposeful
Immersion

Design Focus

**DESIGN AT THE
PERSONAL LEVEL**
Lower School

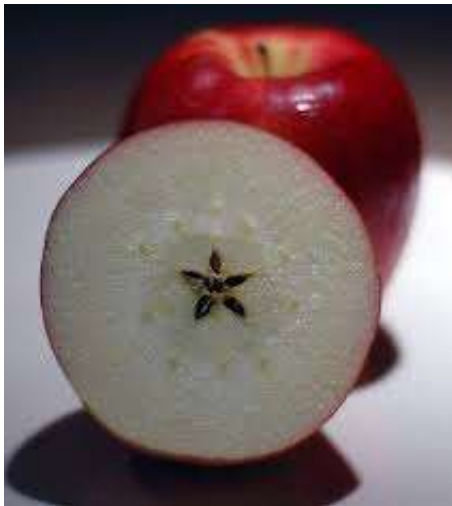
**DESIGN AT THE
COMMUNITY LEVEL**
Middle School

**DESIGN FOR THE
FUTURE**
Upper School



School-Within-School Approach

Feature	Lower School	Middle School	Upper School
Learning Focus	Grow and Be Present	Strive and Be Centred	Flourish and Be Grateful
Developmental Spotlight	Executive Functioning	Self-Discovery	Sense of Belonging
Tribal Storytelling	The Story of the Apple Star	The Story of the Butterfly	The Story of the Eaglets





Character Strengths

JS Learning Dispositions

Motivation
Appreciation
Resilience
Creativity

JS BRIGHT Values

Bravery
Responsibility
Integrity
Inventiveness
Gratitude
Humility
Tenacity

**A Strengths-Based Approach to
Subject Learning and Student Development**

Performance Strengths



National Curriculum

Holistic Development
of Students



Notes

- There is also Character and Citizenship Education (in MT).
- Science starts at P3.

Learning Support

English Language

Students will be identified at P1 through screening exercise that will be conducted upon school entry.

Mathematics

Students will be identified at P1 through screening exercise conducted upon school entry. Additional low progress learners may be subsequently identified for support at the end of P1, P2 or P3, if required.

Mother Tongue Languages

Students will be identified at P2 to join the programme at P3 and P4.

P1 students identified with **social and behavioural needs** to develop foundational self-management skills when they start school.

**Learning Support Programme
(LSP)**

**Learning Support for Mathematics
(LSM) Programme**

**Mother Tongue Support Programme
(MTSP)**

**TRANsition Support for InTegration
(TRANSIT)**

Nurturing a Love for Reading

“Reading holds great value for a child’s development. Research shows that reading can boost cognitive ability and verbal skills in children (A.E. Cunningham, K.E Stanovich).

Reading is a form of relaxation for children and also boosts their imagination as they are introduced to new worlds and characters. Fluent reading is essential for children to be self-directed learners, once they are of school-going age.”





Spotlight on P1 Curriculum Experience

AIMS

**Smooth Transition
from K2 to P1**

**Strong
Fundamentals**

Motivation to Learn

Joy of Learning

FEATURES

- Comprehensive Induction Programme
- Focus on Executive Functioning, Character Strengths, Mindfulness and Gratitude
- No Weighted Assessments
- No Pen-and-Paper Spelling in Semester 1
- Minimal Homework Assignments
- No Afternoon Academic Support Lessons
- READ. READ. READ.
- Feedback on Learning Progress in all Subjects (EL, MT, MA, SC, PE, Art, Music and Social Studies)

Programme for Active Learning (PAL) (P1 and P2)

The PAL logo is displayed in a stylized, bold, white font with a thick yellow outline. It is set against a green background with concentric circles.

Co-Curricular Activities (CCA) (P3 to P6)

Physical Sports	Uniformed Groups
<ul style="list-style-type: none">• Badminton• Basketball• Football• Rope Skipping	<ul style="list-style-type: none">• Girl Guides (Brownies)
Visual and Performing Arts	Clubs and Societies
<ul style="list-style-type: none">• Choir• Cultural Dance• Modern Dance• Art and Crafts	<ul style="list-style-type: none">• Environmental Science• InfoComm Technology (Media Production)• Robotics

“What is JS known for?”

We have been invited and approached to conduct Sharing Sessions and to host Visits and Attachments.

1. Whole-School Approach to Dispositional Development and Nurturing Future-Ready Learners
2. Assessment Practices
3. Use of EdTech
4. Sustainability Education
5. Maker Education
6. Learning Environment (Environment Hub and Maker Space)
7. Culture of Wellbeing
8. Positive Parenting Plan



***“What are the school’s
achievements?”***





- We keep a close watch on academic learning.
- We believe in creating opportunities for all students.
- We seek to empower students in expressing their voice and making their choices.
- We endeavour to support students' discovery of self, pursuit of interests and development of talent.



The Home-School Partnership



JS Positive Parenting Plan

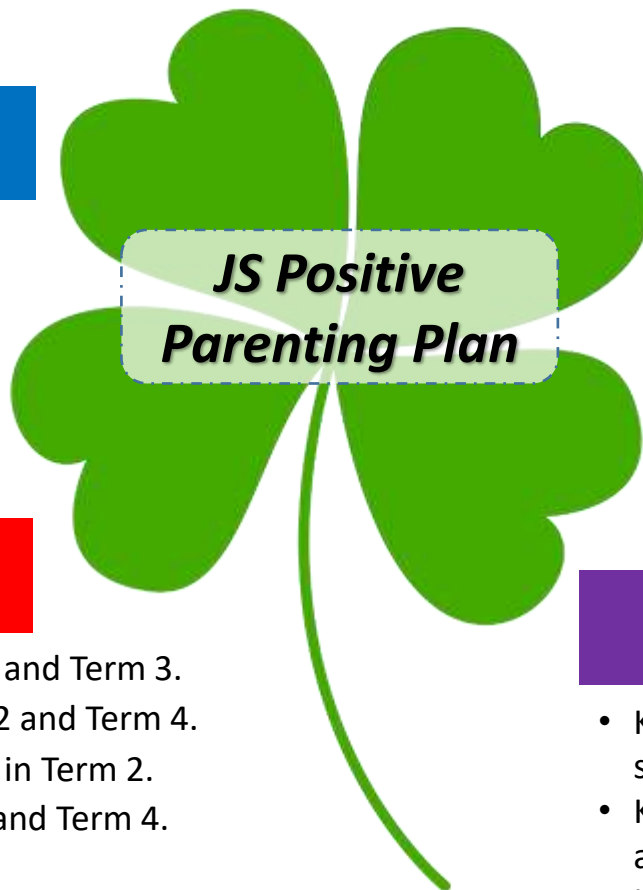
Growing Thriving JingShanites Together

Connecting to The School

- Learn about the school's directions and plans.
- Read the letters and notifications from the school.
- Follow the school's social media accounts.
- Attend the level-specific briefings.

Celebrating Every Child

- Embrace the Character Strength Spotlight in Term 1 and Term 3.
- Access the I Love Learning Progress Report in Term 2 and Term 4.
- Attend the Parent-Child-Teacher Connection (PCTC) in Term 2.
- Receive the Holistic Development Profile in Term 2 and Term 4.



Journeying with The Child

- Attend the Year-Start Parent Seminar which incorporates the Positive Parenting Series.
- Attend the annual Curriculum Seminar for Parents.
- Look out for the termly Positive Parenting Bulletin and carry out the parent-child bonding activities.
- Attend the Signature Lower/Middle/Upper School Event.

Navigating The Landscape

- Keep abreast of youth issues such as mental wellbeing, stress management and cyber wellness.
- Keep abreast of inter-generational issues of communication and caring for the elderly
- Keep abreast of educational and career pathways driven by interest and passion



You are your child's first teacher!

Teach your child to be independent.

Nurture courtesy, respect and care in your child.

DO NOT over-prepare your child on P1 textbooks.

If you do so, you are taking away the joy of learning new things in school.

Cultivate a love for reading.

Read to your child. Read with your child.

Develop a positive work ethic in your child.

Perspiration. Patience. Perseverance.

Get your child familiar with routines.

Get your child familiar with school language and personal items.



School Motto

United and True, Onward We Strive!

School Culture

Learn for Life, Flourish as One



Jing Shan Primary School
United and True, Onward We Strive